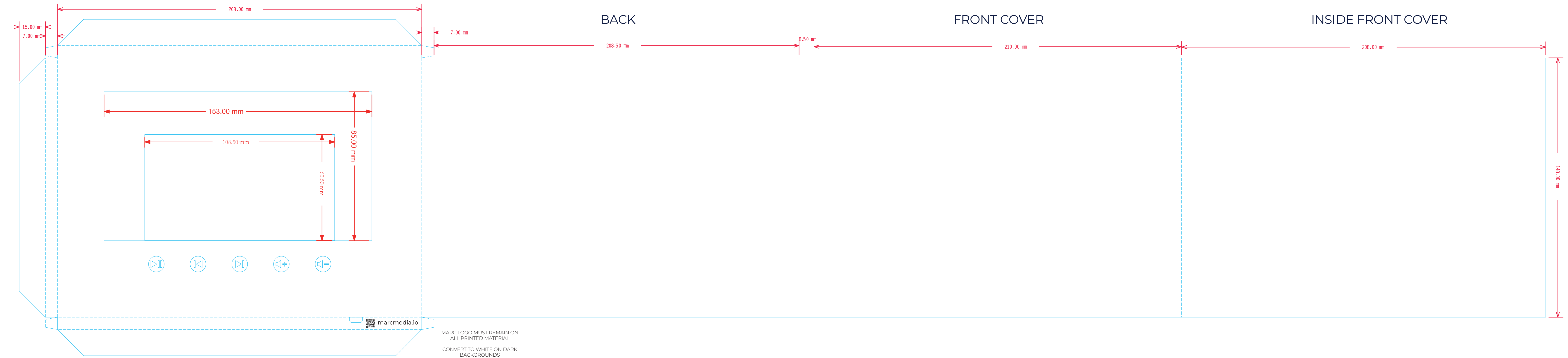


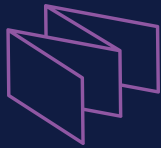


**MARC**

PRINT TEMPLATE &  
SPECIFICATIONS



MARC LOGO MUST REMAIN ON ALL PRINTED MATERIAL  
CONVERT TO WHITE ON DARK BACKGROUNDS



**marc**

**QUESTIONS?**

hello@marcmedia.io  
(212) 696-5558

**marcmedia.io**

## PRINT SPECIFICATIONS

Files may be created in either Adobe Illustrator or InDesign (templates provided)

The screen and buttons may be repositioned however:

- Buttons must be at least 8mm from screen
- The distance between buttons must be 14mm
- Template dimensions must remain unchanged
- Place your artwork as separate layer
- Placed art should conform to standard print specifications, CMYK, 300DPI
- Large areas of dark colors may fingerprint
- Please ensure all fonts for the artwork are converted to outlines
- Save as PDF, but provide original artwork files
- Always add 3 mm of bleed to all edges
- Export all files as print ready PDFs with NO CROPS
- Package all files including any linked art or fonts

## VIDEO SPECIFICATIONS

Preferred formats: MP4, AVI, MOV

- Any frame rate and bitrate
- Video should be trimmed to length and should NOT include any slate, leaders or countdown
- Video should be full screen and not letterboxed
- Files should be provided via Dropbox, Google Drive or Wetransfer